



20  
25

# Impact Report

## Building a Home for Latino Arts & Culture

**A movement  
becoming reality.**

Advocates of a Latino Museum of Cultural and Visual Arts  
& Archive Complex in Houston, Harris County

Carlos Duarte — President  
[president@almaahh.org](mailto:president@almaahh.org)



Dear Friends and Supporters,

## Board of Directors

**Geraldina Interiano Wise**  
Board Chair  
Artist

**Juan Padilla**  
Principal/Shareholder, Doeren Mayhew  
Treasurer

**Wendy Montoya Cloonan**  
Secretary  
Partner, Cantú Harden Montoya LLP

**Tony Castilleja**  
Senior Manager of Boeing Defense,  
Space, and Security

**Mario K. Castillo**  
Chancellor, Lone Star College System

**Tony Diaz**  
Writer, Founder & Director of Nuestra  
Palabra

**Gabriel Esparza**  
Publisher, Que Onda! Magazine

**Mario Enrique Figueroa Jr.**  
GONZO247  
Artist

**Art Chavez**  
Principal Page Architect

**Deborah Lugo**  
VP Programming and Education, The  
Hobby Center for the Performing Arts

**Ana Maria Martinez**  
Professional Opera Singer Artistic  
Consultant HGO

**Teresa Morales**  
Executive Vice President, Amegy Bank

**Alexander Obregon**  
CFO Comcast

**Hugo Ortega**  
Executive Chef/Owner of H Town  
Restaurant Group, 2017 James Beard  
Foundation Award

**Annise Parker**  
Former Houston Mayor

**Fernanda Razo**  
High School Educator

**Rebecca Reyes**  
CEO, BecTec Construction Resources,  
LLC

**Peter Rodriguez**  
Dean Jesse H. Jones Graduate School  
of  
Business at Rice University

**Graciela Saenz**  
Lawyer, Activist

**Massey Villarreal**  
CEO, Precision Task Group

As we look ahead to 2026, I am proud to share that ALMAAHH has entered a new stage of strength and vibrancy. This past year marked a turning point—when our vision began to take tangible shape and ALMAAHH matured into a fully viable, independent, and strategically positioned cultural institution.

## Facilities & Site Development

In 2025, ALMAAHH made decisive progress toward establishing its future arts and culture landmark destination. With support from Harris County, the City of Houston, Buffalo Bayou Partnership, and multiple consultants, we focused on land strategy, and early design visioning with Page Architects and SWA. Through coordinated negotiations with key stakeholders and supporters, a clear path toward site control emerged. The Facilities and Planning Committee played a central role in shaping the technical analyses and guiding strategic recommendations.

## Community-Rooted Work

Our work remained firmly grounded in community engagement. ALMAAHH held a public update and listening session, supported by surveys and work groups involving Latino creators and community leaders. Their insights directly shaped our programming and informed early thinking about the district's design. Strengthened alliances—across major cultural institutions, grassroots organizations, non-Latino cultural entities, and private-sector partners—expanded our reach and reinforced trust throughout the community.

## Program Expansion

Our 2025 programming was multidisciplinary, citywide, and increasingly collaborative. ALMAAHH engaged over 200 artists, activated multiple neighborhoods, and welcomed more than 7,000 participants through partnerships with 19 institutions. This year's program not only elevated Latino creativity, but also served as a platform to prepare communities for the next phases of the project.

## Organizational Strengthening

ALMAAHH completed its transition to a fully independent 501(c)(3), built robust operational systems, and established a strong committee structure. A Chief Development Officer will join us in early 2026, strengthening our institutional capacity for the years ahead. Benchmarking trips to New Orleans, Los Angeles, and El Paso provided valuable lessons that inform our institutional design and community-engagement approach.

## Looking Ahead to 2026

The coming year will focus on land consolidation, financial feasibility, and organizational deepening. ALMAAHH will complete land negotiations, launch the economic impact and feasibility study, form a Site Development Steering Committee, select a developer, and advance the master plan and financial proforma. We will also begin designing the capital campaign and updating our strategic plan to reflect the institution's new phase of growth. A core objective will be defining our educational component—exploring integration opportunities with legacy organizations, shaping key elements of the site's master plan, and establishing the foundations for ALMAAHH's role as an educational, artistic, and civic institution.

Thank you for your continued trust and support. Together, we are creating a place that embodies pride, excellence, and belonging—a permanent home for American Latino arts and culture.

With gratitude,

Carlos Duarte  
President, ALMAAHH



# Our Impact



## BRIDGE

BETWEEN ARTS AND  
CULTURE  
INSTITUTIONS AND  
LATINO ARTISTS AND  
AUDIENCES



## CONVENER

OF LATINO  
ORGANIZATIONS AND  
CREATORS

## PROGRAMMING



**54 COMMUNITY  
PARTNERS**



**29 CULTURAL EVENTS  
WITH 7,000+  
ATTENDEES**



**200+ ARTISTS  
ENGAGED**

## GROWING SUPPORT

- ✓ Harris County
- ✓ Houston City Council
- ✓ Brown Foundation
- ✓ Houston Endowment
- ✓ Madrinas & Padrinos

"ART"

## ALLIANCES

**Continuous listening** session  
+ surveys + focus groups

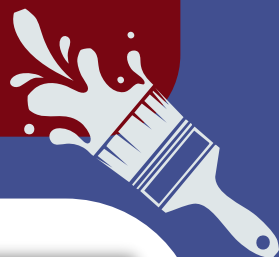
**Engagement** from Latino  
creatives and community  
leaders

**Strengthened** partnerships  
with MFAH, HCCC, Hobby  
Center, HPL

**Expanded** collaborations  
with Legacy, Latino-led and  
grassroots organizations

## FACILITIES

- ✓ Clear pathway towards a  
landmark arts and cultural  
destination
- ✓ Site concepts in  
development





## Community & Cultural Partnerships

In 2025, ALMAAHH strengthened alliances across Houston's arts ecosystem, collaborating with major institutions, grassroots organizations, and civic partners to expand visibility and access for Latino artists.

### Key 2025 Partnerships Included:

- Museum of Fine Arts Houston
  - Houston Center for Contemporary Craft
  - Hobby Center for the Performing Arts
  - Houston Public Library
  - Houston Latino Film Festival
  - Nuestra Palabra
  - The Ponce Project
  - Tagore Center Foundation
  - Texas Medical Center
- ...and many more.

### How Partner Support Makes an Impact

Your investment in ALMAAHH fuels:

- Community-centered, multidisciplinary programming
- Engagement of 200+ local artists annually
- Continued site design, planning, and development
- A permanent cultural home for Latino arts & culture

### Looking Ahead to 2026

Support in 2026 will help advance:

- Land consolidation & site negotiations
- Financial feasibility & impact studies
- Master planning & design development
- Expansion of educational programming
- Growing community engagement citywide

## Special Thanks

